

USB to Serial Adapter Configuration Instructions

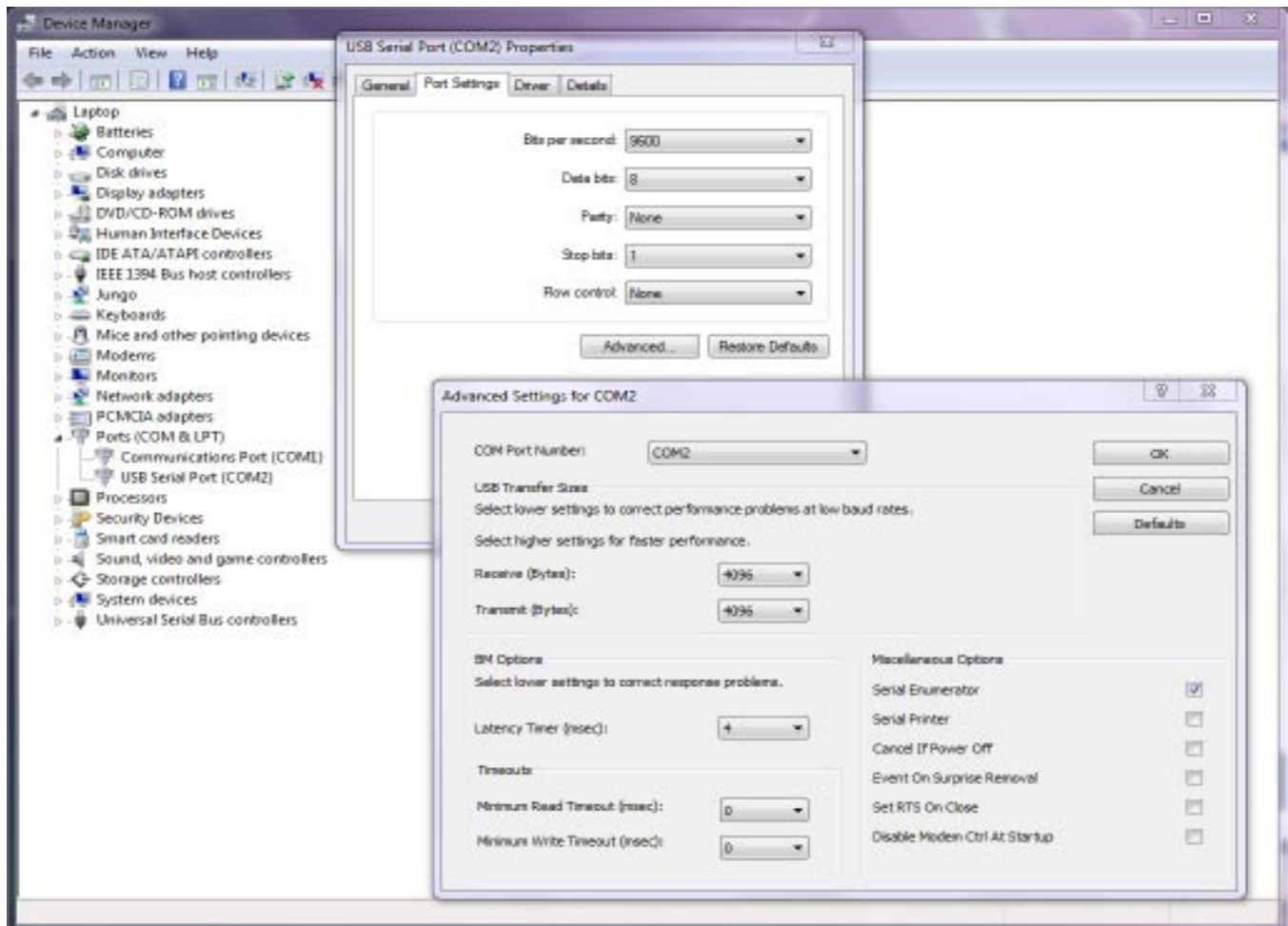
Before following these instructions you must have the USB to Serial drivers installed.

NOTE: These drivers are only for the Zeus supplied USB to Serial cable or an adapter that uses the FTDI FT232R chip. These drivers *will not work* with any other adapter!

If you have not done so yet, go to Zeus-ECM.com and on the Installation page download and run the USB to Serial drivers (file name 'CMD20824_Setup.exe')

After the USB to Serial drivers are installed they must be configured to work with the Zeus.

1. Plug your USB to Serial adapter into any unused USB port. Windows will recognize the adapter and install the device.
2. Windows will tell you when the device is installed and working correctly.
3. Open Device Manager. Under 'Ports(COM & LPT)' you will see your USB Serial Port listed with its port number in parentheses. In the screenshot below the port is listed as COM2, your number may be different. Right click on the USB Serial Port device and select 'Properties' (see below).
4. In the 'Properties' dialog box, under the 'Port Settings' tab, click the 'Advanced' button.
5. In the 'Advanced Settings' dialog box locate the 'Latency Timer (msec)' control and set the value to '4', (see below).
6. Click 'OK' to leave the 'Advanced Settings' dialog box and the click 'OK' again to leave the 'Properties' dialog box. Do not leave 'Device Manager' yet.



7. While still in 'Device Manager', under 'USB Serial Bus controllers' you will see 'USB Serial Converter'. Right click this and select 'Properties'
8. Under the 'Advanced' tab make sure that the 'Load VCP' control is checked (as shown below). If it is not checked, check it.
9. Click 'OK' to save the setting. Close "Device Manager".

Your USB to Serial cable is now ready to use!

